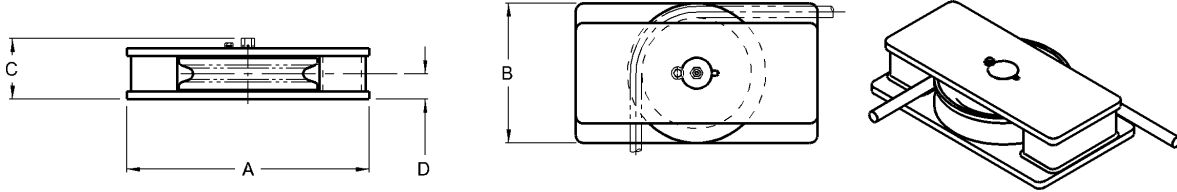




Horizontal Guide Sheaves



Model Number	Units of Measure	Maximum Wire Size	Wire Breaking Strength	Sheave Tread Diameter	A	B	C	D	Weight
MD-1210	Inches	3/4	58,800 lbs	8- 1/2	17	11	5- 1/2	2- 3/16	85 lbs
	MM	19	262 kN	216	432	279	140	56	39 Kg
MC-1212	Inches	1	89,800 lbs	10	19	12	6- 1/2	2- 3/4	150 lbs
	MM	25	399 kN	254	483	305	165	70	68 Kg
MD-1214	Inches	1- 1/4	159,800 lbs.	11- 7/16	21	14	7	2- 3/4	200 lbs
	MM	32	711 kN	291	533	356	178	70	91 Kg
MD-1218	Inches	1- 1/2	228,000 lbs.	14- 1/4	31- 1/2	18	8	3- 5/16	450 lbs
	MM	38	1014 kN	362	800	457	203	84	204 Kg
MC-1222	Inches	1- 3/4	266,000 lbs.	18- 1/2	41	22	8- 1/2	3- 1/2	880 lbs
	MM	44	1183kN	470	1041	559	216	89	399 Kg

Standard Features

- Designed for breaking strength of wire with 90° wrap on sheave
- Grease lubricated bronze bearings
- Hardened rope grooves for longer life
- Weld down base
- Smith Berger Quality

Optional Features

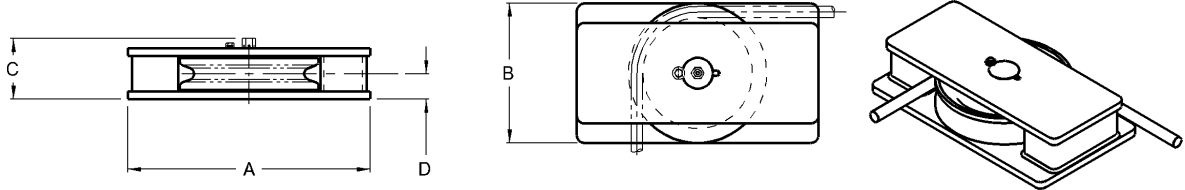
- Multiple Sheaves
- Bolt down base
- Load monitoring system
- Special sheaves for high performance ropes
- Paint to your specification
- Timken bearings
- Third party certification

*We will custom engineer any of our products to suit **YOUR** requirements!*

7915 10th Ave. S., Seattle, WA 98108 USA - Tel: 206-764-4650 - Fax: 206-764-4653 - Website: www.SmithBerger.com



Horizontal Guide Sheaves



Model Number	Units of Measure	Maximum Wire Size	Wire Breaking Strength	Sheave Tread Diameter	A	B	C	D	Weight
MC-1224	Inches	2	344,000 lbs.	20	43	25	8- 1/2	3- 5/8	975 lbs
	MM	51	1530 kN	508	1092	635	216	92	442 Kg
MC-1230	Inches	2- 1/4	494,000 lbs.	24- 7/8	45	30- 5/8	11- 1/2	4- 1/8	1500 lbs
	MM	57	2198 kN	632	1143	778	292	105	680 Kg
MC-1236	Inches	2- 1/2	524,000 lbs.	30	55	37	13	5- 3/4	2800 lbs
	MM	64	2331 kN	762	1397	940	330	146	1270 Kg
MD-1252	Inches	3	818,000 lbs.	44	83- 1/2	53	14	6- 1/4	6000 lbs
	MM	76	3639 kN	1118	2121	1346	356	159	2722 Kg
MD-1268	Inches	3- 1/4	1,223,775 lbs	59- 1/16	100	70	17	7	8000 lbs
	MM	83	5444 kN	1500	2540	1778	432	178	3629 Kg

Standard Features

- Designed for breaking strength of wire with 90° wrap on sheave
- Grease lubricated bronze bearings
- Hardened rope grooves for longer life
- Weld down base
- Smith Berger Quality

Optional Features

- Multiple Sheaves
- Bolt down base
- Load monitoring system
- Special sheaves for high performance ropes
- Paint to your specification
- Timken bearings
- Third party certification

*We will custom engineer any of our products to suit **YOUR** requirements!*