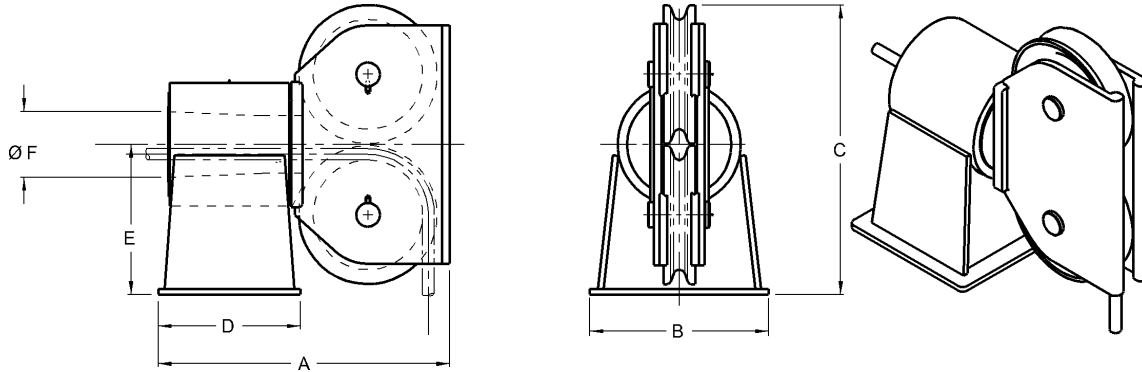




# Deck Mounted Double Sheave Fairleads



Model Number	Units of Measure	Maximum Wire Size	Wire Breaking Strength	Sheave Tread Diameter	A	B	C	D	E	F	Weight
MD-2610	Inches	3/4	58,800 lbs.	8- 1/4	24-11/16	16	22	14- 3/4	11	4- 1/2	280 lbs.
	MM	19	262 kN	210	627	406	559	375	279	114	127 Kg
MD-2612	Inches	1	103,400 lbs.	9- 3/4	29- 3/16	19- 1/4	25	17- 3/4	13- 1/2	5- 5/8	520 lbs.
	MM	25	460 kN	248	741	489	635	451	343	143	236 Kg
MD-2614	Inches	1- 1/4	159,800 lbs.	11- 1/4	31- 9/16	20	29	18- 1/2	15- 1/2	6- 5/16	700 lbs.
	MM	32	711 kN	286	802	508	737	470	394	160	318 Kg
MD-2618	Inches	1- 1/2	228,000 lbs.	14- 1/4	39- 1/8	25- 1/4	37- 5/8	21	19- 1/2	8- 1/2	1500 lbs.
	MM	38	1014 kN	362	994	641	956	533	495	216	680 Kg
MC-2622	Inches	1- 3/4	266,000 lbs.	18- 1/2	46- 1/8	28- 1/2	48	22	23- 1/2	9- 1/2	2200 lbs.
	MM	44	1183kN	470	1172	724	1219	559	597	241	998 Kg

## Standard Features

- Designed for breaking strength of wire with 90° wrap on sheave and +/- 90° rotation of swivelhead
- Sealed grease lubricated Timken tapered roller bearings
- Hardened rope grooves for longer life
- Weld down base
- Smith Berger Quality

## Optional Features

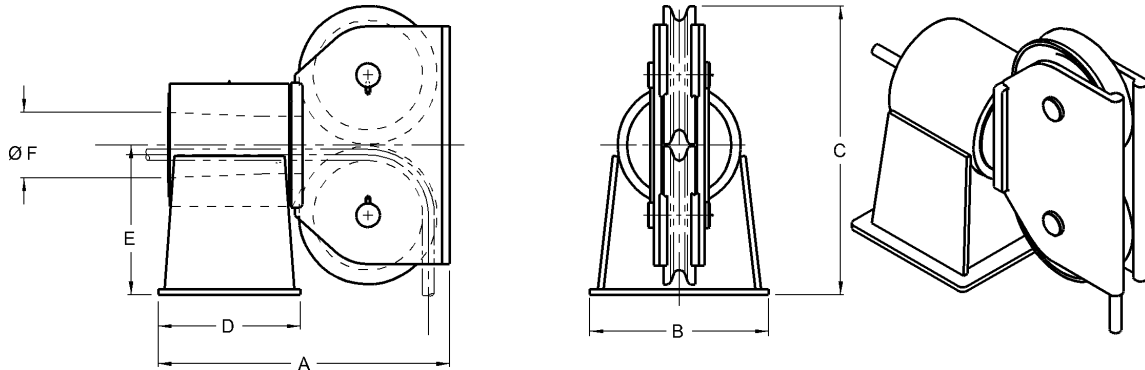
- Tail Sheaves / Tail Rollers
- Load monitoring system
- Paint to your specification
- Bolt down base
- Special sheaves for high performance synthetic ropes
- Third party certification

*We will custom engineer any of our products to suit **YOUR** requirements!*

7915 10th Ave. S., Seattle, WA 98108 USA - Tel: 206-764-4650 - Fax: 206-764-4653 - Website: [www.SmithBerger.com](http://www.SmithBerger.com)



# Deck Mounted Double Sheave Fairleads



Model Number	Units of Measure	Maximum Wire Size	Wire Breaking Strength	Sheave Tread Diameter	A	B	C	D	E	F	Weight
MC-2624	Inches	2	344,000 lbs.	20	51- 1/8	30	49- 5/8	27	25- 1/2	12	2800 lbs.
	MM	51	1530 kN	508	1299	762	1260	686	648	305	1270 Kg
MD-2630	Inches	2- 1/4	494,000 lbs.	24- 7/8	57- 7/8	40- 1/4	61- 5/8	27- 1/2	31- 1/2	13	5020 lbs.
	MM	57	2198 kN	632	1470	1022	1565	699	800	330	2277 Kg
MC-2636	Inches	2- 1/2	524,000 lbs.	30	64	40	72- 5/8	27- 1/2	36- 1/4	14- 1/2	6270 lbs.
	MM	64	2331 kN	762	1626	1016	1845	699	921	368	2844 Kg
MD-2652	Inches	3	818,000 lbs.	44	104	52- 3/8	105- 5/8	44	34- 1/2	26- 1/2	17,200 lbs.
	MM	76	3639 kN	1118	2642	1330	2683	1118	876	673	7801 Kg
MD-2665	Inches	3	818,000 lbs.	55- 1/2	117	52- 3/8	130- 5/8	44	34- 1/2	26- 1/2	19,650 lbs.
	MM	76	3639 kN	1410	2972	1330	3318	1118	876	673	8913 Kg

## Standard Features

- Designed for breaking strength of wire with 90° wrap on sheave and +/- 90° rotation of swivelhead
- Sealed grease lubricated Timken tapered roller bearings
- Hardened rope grooves for longer life
- Weld down base
- Smith Berger Quality

## Optional Features

- Tail Sheaves / Tail Rollers
- Load monitoring system
- Paint to your specification
- Bolt down base
- Special sheaves for high performance synthetic ropes
- Third party certification

*We will custom engineer any of our products to suit **YOUR** requirements!*